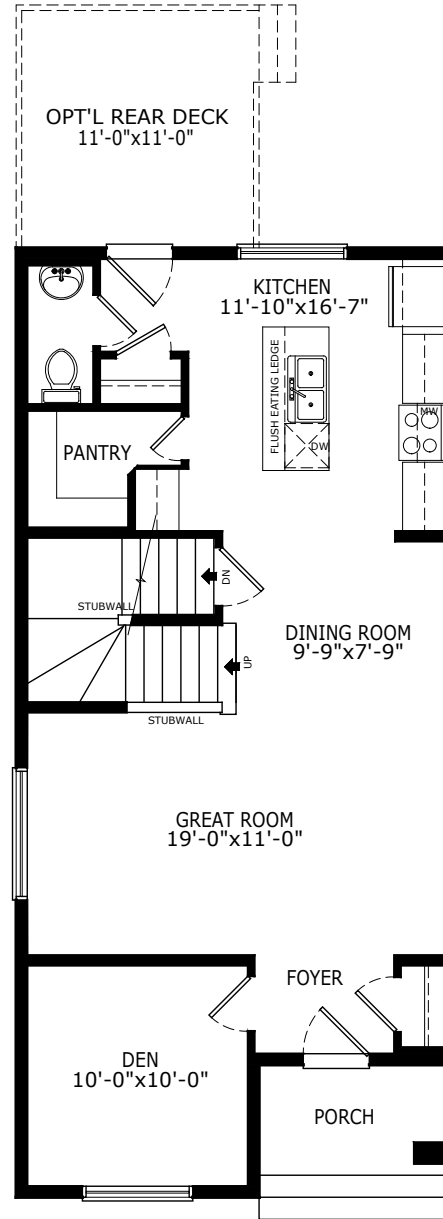
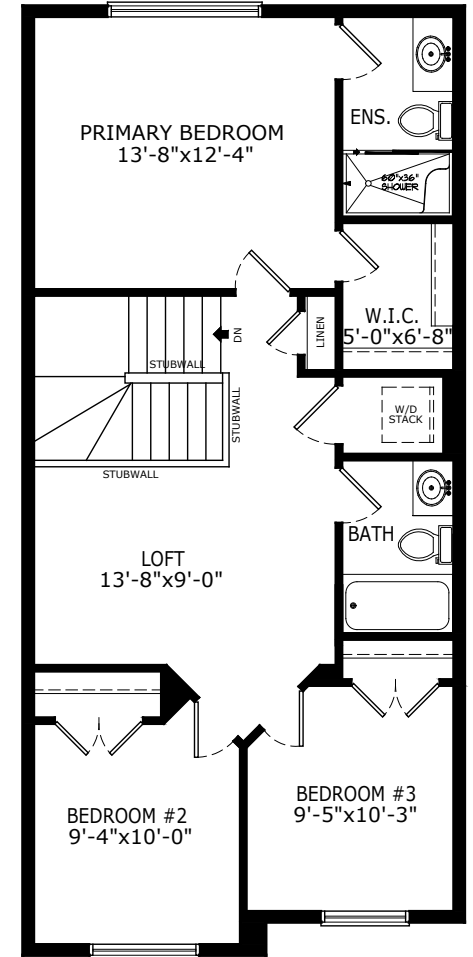


1590 SQ FT
3 BEDS
2.5 BATHS

ONYX



MAIN: 806 SQ FT



UPPER: 784 SQ FT

Sterling HOMES

A QUALICO Company

ELEVATIONS



CONTEMPORARY
ARTS & CRAFTS



CONTEMPORARY
ARTS & CRAFTS #2



CONTEMPORARY
PRAIRIE



CONTEMPORARY
PRAIRIE #2



CRAFTSMAN



FARMHOUSE



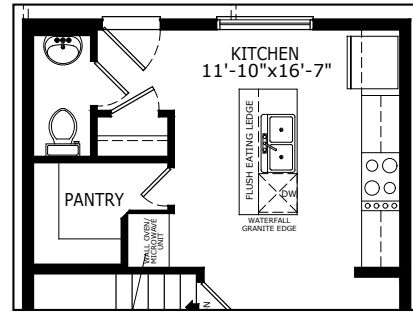
MODERN



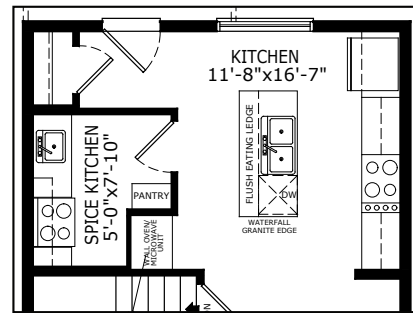
PRAIRIE

MAIN FLOOR OPTIONS

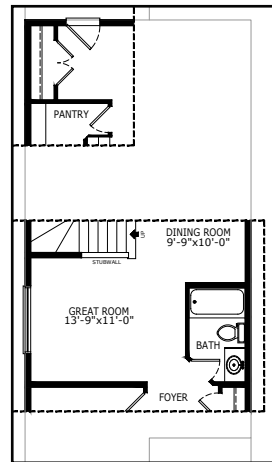
OPTIONAL EXECUTIVE KITCHEN



OPTIONAL SPICE KITCHEN

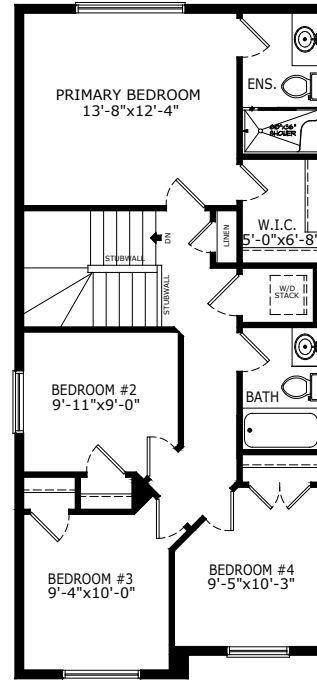


OPTIONAL FULL BATH

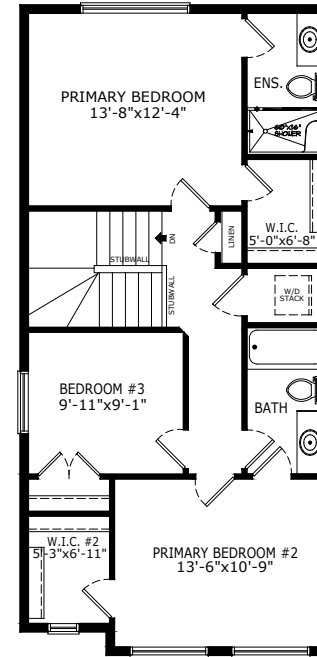


UPPER FLOOR OPTIONS

OPTIONAL 4 BEDROOMS

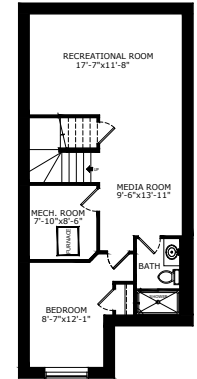


OPTIONAL 2ND PRIMARY
BEDROOM

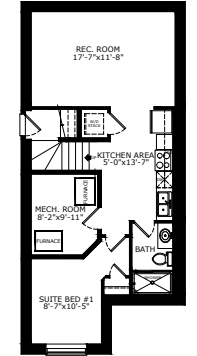


BASEMENT OPTIONS

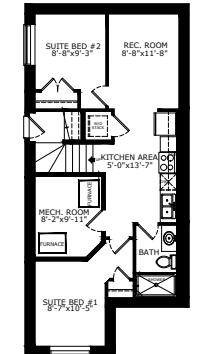
STANDARD 593 SQ FT



1 BEDROOM
‘LEGAL SUITE’ 583 SQ FT



2 BEDROOM
‘LEGAL SUITE’ 583 SQ FT



Scan here
for floorplan
options and
more

*Legal Suite availability varies by community and municipal regulations.

Build Your Life

STERLINGCALGARY.COM